

Press Information

The DRÄXLMAIER Group

CEO	Jürgen Otto
Headquarters	DRÄXLMAIER Group Landshuter Str. 100 D-84137 Vilsbiburg
Résumé	The DRÄXLMAIER Group is an international automotive supplier with more than 60 sites in over 20 countries. The company was founded in Germany in 1958.
Employees	more than 70,000 worldwide
Turnover 2018	4.6 billion euro
Customers	Audi, BMW, Jaguar, Land Rover, Maserati, Mercedes-Benz, MINI, Porsche, VW, as well as highly innovative Californian automotive manufacturers
Products	Electrical systems, electrical and electronic components, interior, battery systems
Market position	The inventor of the customer-specific wiring harness, the DRÄXLMAIER Group stands for pioneering innovations in conventional and alternative drive systems, as well as in electrical and electronic components. Among these are multi-voltage and high-voltage wiring harness systems, as well as HV battery systems. As the market leader for the complete interior for premium automobiles, the DRÄXLMAIER Group also supplies renowned automobile manufacturers with center consoles, door panels and instrument panels, as well as complete door and cockpit modules
Awards	<ul style="list-style-type: none">• <i>Top Employer Automotive Germany 2018</i>• <i>Finalist of the Sustainability Award Logistics 2018</i>• <i>Volkswagen Group Award 2017</i> in the category <i>New Mobility Solutions</i>• <i>Qualitas Award 2016</i> of Fiat Chrysler Automobiles

- *eLogistics Award 2016*
in the category *Network Control*
- *Local Content Parts Supplier of the Year 2016*
of Mercedes-Benz to DRÄXLMAIER Malaysia
- *JLRQ Award 2015*
of Jaguar Land Rover
- *Qualitas Award 2015*
of Fiat Chrysler Automobiles
- *Red Dot Award 2015*
- *Top 500 Award for Sustainable Growth*
of the Welt-Gruppe
- *Top 100 Award 2014*
of the journal *Automobil Produktion*
in the category *Biggest Sales Growth*

Sites in

Austria
China
Egypt
Germany
Great Britain
Hungary
India
Italy
Malaysia
Macedonia
Mexico
Moldova
Nicaragua
Poland
Romania
Serbia
Spain
South Africa
Thailand
Tunisia
USA

History

1958 the DRÄXLMAIER company receives its first order: 50,000 wiring harnesses for the Goggomobil manufactured by Hans Glas GmbH in Dingolfing. The second product division is set up shortly afterwards. With the instrument panels, door panels, seat covers and rear window shelves, DRÄXLMAIER now delivers a portion of the interior for the microcar, built until 1969.

1960 DRÄXLMAIER installs the first machines for the high-frequency welding of door panels, and at the same time, introduces vacuum forming of thermoplastic film for the manufacture of instrument panels. That forms the basis for comprehensive process know-how in the subsequent interior systems segment.

1966 DRÄXLMAIER acquires the new customer BMW, which prior to that had taken over the Glas company in Dingolfing. This move is the first step towards the subsequent focus on the automobile premium segment.

1970 starts the construction of the new production and administration building in Brückenstrasse, Vilsbiburg, Germany.

1974 DRÄXLMAIER puts its first foreign production site into operation in Tunisia and continues expanding its presence in North Africa. Not long afterwards, the company follows the customer Volkswagen to North America and sets up a production site there. That represents the starting point for today's global presence and international integration of the group of companies.

1976 DRÄXLMAIER begins with the production of wiring harnesses and interior components in North America (Canada).

1980 the production sites continue to expand: One company becomes six, and from the original 10 employees there are now 1,300. A new hall is built for DRÄXLMAIER in Braunau, Austria, and four new foreign companies are founded.

1987 sees the introduction of an automatic high-rack and small parts storage system in Vilsbiburg. Even today, the logistics center, which has been expanded several times since then, remains the central pivotal point of the company's worldwide supply chain. The entire material flow and all the important just-in-time (JIT) and just-in-sequence (JIS) processes are controlled from here.

1990 DRÄXLMAIER brings the customer-specific wiring harness (KSK) to the market for the first time. Primary customers for this are Audi, BMW and Mercedes-Benz at the time. The product revolutionizes the architecture of wiring harness systems, since the new wiring harness contains only the components that the specific vehicle requires. This innovation is the basis for DRÄXLMAIER's leading position in the area of wiring harness systems.

1994 DRÄXLMAIER wins the concept competition for the development, production and delivery of the whole cockpit volumes for the Mercedes-Benz CLK, thus becoming a systems supplier for vehicle interior equipment and gaining overall responsibility for development, manufacture, logistics, assembly and quality assurance.

1995 DRÄXLMAIER begins development of interior products from natural fibers. The door panels for the Mercedes Benz S-Class Coupé as well as the Audi A2, which come to market in 1999, consist of hemp, flax and sisal.

1997 DRÄXLMAIER develops a functionally integrated door module. With the new door for the BMW 7 Series comes the first interior module that integrates all the electrical and electronic functions of a door into one overall system. Effective development and logistics processes also satisfy the customer, who shortly afterwards places the order for the functionally integrated center console in the BMW 7 Series.

1998 the DRÄXLMAIER Technology Center is opened in Vilsbiburg. It is a sign of the company's distinctive innovative strength and high degree of development competence and at the same time forms the basis for research and development.

1999 DRÄXLMAIER is the first systems supplier to develop and produce an all-leather interior for the Mercedes-Benz CL coupé. This is followed a year later by the whole interior for the BMW Z8, and three years after that by the luxury limousine Maybach. DRÄXLMAIER also develops and supplies the electrical system for all three models. This establishes the company as a specialist for interior and electrical systems in the premium segment.

2000 with the first door substrate made out of renewable raw materials, DRÄXLMAIER makes the lightest door in the world for the Audi A2 – even then, ahead of its time and focusing on sustainability.

2003 DRÄXLMAIER opens its first plant in Langfang in China, where it starts production in the electrical and interior segments at the beginning of 2004.

2005 production begins at the site in San Luis Potosi in northern central Mexico. This is first of the current three sites that were established in Mexico during a four-year span. Since 2010, DRÄXLMAIER also operates a plant in Masaya, Nicaragua.

2007 besides Serbia and Romania, DRÄXLMAIER expands its presence in Eastern Europe with the start of production in Moldova.

2008 DRÄXLMAIER introduces extremely light natural fiber composite material for vehicle interiors. The door paneling developed for the BMW 7 Series carline consists of biocomposite material, which at this time is the lightest of all materials. With this weight reduction, DRÄXLMAIER makes a substantial contribution towards reducing gasoline use and CO² emission. Automation in production and the development of new architectures is further advanced in the area of electrical systems.

2009 DRÄXLMAIER receives the order for high-voltage wiring harness systems for various Mercedes-Benz and Smart models with battery drives, hybrid technology, plug-in hybrids and future fuel cell drives. This is an initial success in the area of electrical mobility, in which the company will continue to be involved, with innovative developments and products.

2010 DRÄXLMAIER opens a new plant in Xiaoshi, China.

2011 DRÄXLMAIER develops the world's first door panel with visible natural fibers, setting new aesthetic standards in automobile interiors.

2012 the company expands its existing production space in Shenyang, thus tapping the growth potential on the Chinese market. DRÄXLMAIER sets up a full-service production plant in Kavadarci, Macedonia. In Brasov, Romania, DRÄXLMAIER provides the initiative to begin a dual vocational education program based on the German model.

2013 sees the start of series production of the door panel with visible natural fibers for the new BMW i3. DRÄXLMAIER establishes another plant in Leipzig.

2014 DRÄXLMAIER receives an award for the largest growth among the top 100 automotive suppliers worldwide. The professional training program at DRÄXLMAIER celebrates its 40-year anniversary. The DRÄXLMAIER Group has been successfully producing for German premium carmakers in China for 11 years. The automotive supplier establishes a new interior systems site in Langfang, China. Since DRÄXLMAIER places great importance on the training of its employees, young people in China are now being trained according to the same standards as in Germany.

2016 the DRÄXLMAIER Group has reason to celebrate: DRÄXLMAIER has been closely associated with BMW for 50 years, contributes to the Premium brand with its know-how and accompanies vehicle projects from the very first idea right up to series supply. The equipment of the BMW 1600 GT in 1966 was the first order that DRÄXLMAIER received from BMW.

2017 the DRÄXLMAIER Group continues to grow, in Mexico at the plant site in Matehuala and in the USA at the Livermore site in California. The company sets up its first highly automated battery production in Sachsenheim near Stuttgart. This plant produces a powerful 800 volt overall battery system for a fully electric sports car. As a partner company, the DRÄXLMAIER Group supports the Bavarian regional competition of Jugend forscht – a competition in which young researchers develop and present scientific projects.

2018 the DRÄXLMAIER Group celebrates its sixtieth company anniversary. The DRÄXLMAIER Campus is being set up in the GALILEO at the Technical University Munich. Together with faculties of the TUM, DRÄXLMAIER developers there are researching future issues in the automobile industry.

CONTACT SHEET

DRÄXLMAIER Group

Vilsbiburg, Germany – 2019. Please scan the QR Codes to download the press photos listed below.

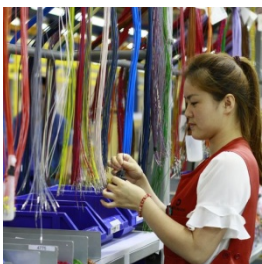
Production and logistics



<https://www.draexlmaier.com/en/press/press-photos/press-photos-detail/gallery/produktion-logistik/>



Wiring harness production



Production



Interior production



System competence



Logistics

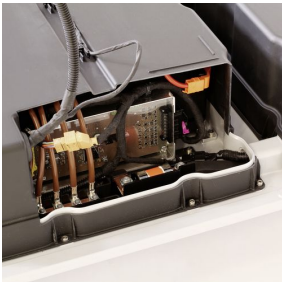
Products



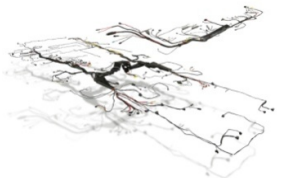
<https://www.draexlmaier.com/en/press/press-photos/press-photos-detail/gallery/produkte-1/>



Ambient light in a door panel



Battery system



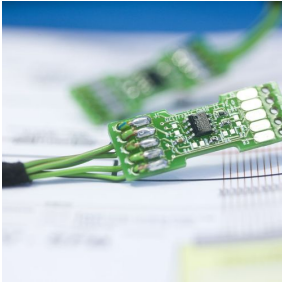
Wiring harness system



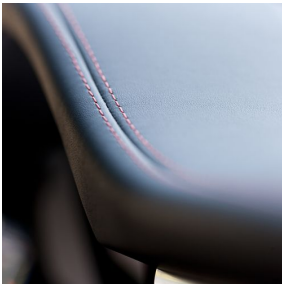
Modular power distributor



Electronic component with case



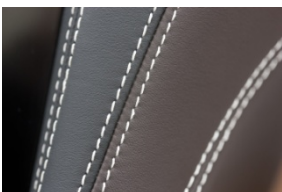
Electronic contacting



Red ornamental seam in the interior



Door carrier made of kenaf



Ornamental seam in the interior in detail

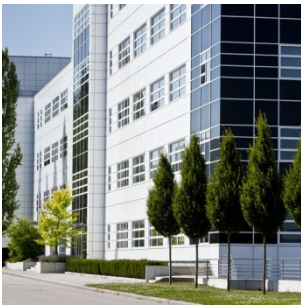


Two-pole high-voltage plug

Sites



<https://www.draexlmaier.com/en/press/press-photos/press-photos-detail/gallery/standorte/>



The headquarters in Vilsbiburg, Germany



Braunau, Austria



Duncan, USA



El Jem, Tunisia



Jelenia Gora, Poland



Kavadarci, Macedonia



Munich, Germany



Pitesti, Romania



Satu Mare, Romania



Shenyang, China



Sousse, Tunisia



Zrenjanin, Serbia

Press contact:

Dr. Tobias Nickel | Director of Marketing and Corporate Communications

Doris Zellner | Head of Corporate Communications

DRÄXLMAIER Group | Landshuter Strasse 100 | 84137 Vilsbiburg | Germany

Telephone: +49 8741 47-4747 | Fax: +49 8741 47-1960

E-mail: press@draexlmaier.com

www.draexlmaier.com

Effective: May 2019